

CASH-WA DISTRIBUTING PRODUCT GUIDE



Companions™

Together, we're better.

Can You Use a Hand? Good help is hard to find. You are faced with an array of challenges and need reliable solutions. The Companions line of disposables and non-foods is designed to deliver the stress-free support that you expect. Whether it's food safety best practices or helping you grow your to-go trade, let Companions lend a hand.



Cash-Wa Distributing ©2024 • 401 West 4th Street, Kearney NE 68845 • Ph: (308) 237-3151 • www.cashwa.com

We reserve the right to limit quantities & correct printing errors.



ALUMINIUM STEAM TABLE PANS & LIDS

| | | |
|-------|---|-------|
| 86254 | 1/2 Size Steam Table - Deep 12 3/4" x 10 3/8" | 100ct |
| 86256 | Lid for 1/2 Size Steam Table 12 13/16" x 10 7/16" | 100ct |
| 86252 | Full Size Steam Table - Deep 20 3/4" x 12 13/16" | 50ct |
| 86255 | Lid for Full Size Steam Table 20 13/16" x 12 7/8" | 50ct |



ALUMINIUM ROUND CONTAINERS

| | | |
|-------|--------------------|-------|
| 86253 | 9" Round, 8 15/16" | 500ct |
| 86095 | 7" Round, 7 1/8" | 500ct |



ALUMINIUM FOIL DISPENSER ROLLS

| | | |
|-------|--|--------|
| 82575 | Foodservice Foil, Heavy Duty, 18" x 500' | 1 Roll |
| 82576 | Foodservice Foil, Standard, 12" x 1000' | 1 Roll |
| 82579 | Foodservice Foil, Standard, 18" x 500' | 1 Roll |
| 82577 | Foodservice Foil, Standard, 18" x 1000' | 1 Roll |
| 82574 | Foodservice Foil, Heavy Duty, 18" x 500' | 1 Roll |



ALUMINIUM FOIL SHEETS

| | | |
|-------|--|------------------|
| 82578 | Interfolded Foil Pop-up Sheets 12" x 10 3/4" | 3000ct (6/500ct) |
| 82573 | Interfolded Foil Pop-up Sheets 9" x 10 3/4" | 3000ct (6/500ct) |



STRAWS

| | | |
|-------|--|-----------|
| 89407 | Straws 8" Black Cocktail Up-Bs808blk | 10/500ct |
| 89406 | Straws 8" Cocktail Red Up-Bs8red | 10/500ct |
| 89408 | Straws 8" Neon Cocktail Up-Bs8neon | 10/500ct |
| 89409 | Straws Jumbo 7.75" Clear Wrap Up-Jw24/500c | 24/500ct |
| 89411 | Straws Neon 5.25" Cocktail Up-Bs5neon | 10/1000ct |





COMPANIONS LATEX GLOVES

| | | |
|--------|---|---------------|
| 103228 | Merit - Latex Gloves - Ivory - Powdered - Medium | 4/100ct (400) |
| 103229 | Merit - Latex Gloves - Ivory - Powdered - Large | 4/100ct (400) |
| 104029 | Latex Gloves - Powdered - Large | 4/100ct (400) |
| 103230 | Merit - Latex Gloves - Ivory - Powder Free - Medium | 4/100ct (400) |
| 103231 | Merit - Latex Gloves - Ivory - Powder Free - XL | 4/100ct (400) |
| 103232 | Essentials - Latex Gloves - Ivory - Powdered - Medium | 10/100ct |
| 103233 | Essentials - Latex Gloves - Ivory - Powdered - Large | 10/100ct |
| 103233 | Essentials - Latex Gloves - Ivory - Powdered - Large | 10/100ct |

COMPANIONS HYBRID STRETCH GLOVES

| | | |
|--------|-----------------------------------|----------|
| 103729 | Glove Hybrid Stretch Clear Small | 10/100ct |
| 103728 | Glove Hybrid Stretch Clear Medium | 10/100ct |
| 103727 | Glove Hybrid Stretch Clear Large | 10/100ct |
| 103730 | Glove Hybrid Stretch Clear XL | 10/100ct |

COMPANIONS VINYL GLOVES

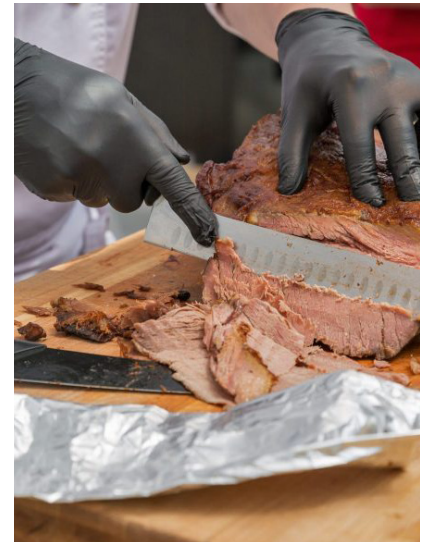
| | | |
|--------|---|---------------|
| 103221 | Merit Vinyl Glove - Powder Free - Medium | 4/100ct (400) |
| 103222 | Merit Vinyl Glove - Powder Free - Large | 4/100ct (400) |
| 103223 | Essentials Vinyl Glove - Powdered - Large | 10/100ct |
| 103224 | Essentials Vinyl Glove - Powder Free - Small | 10/100ct |
| 103225 | Essentials Vinyl Glove - Powder Free - Medium | 10/100ct |
| 103226 | Essentials Vinyl Glove - Powder Free - Large | 10/100ct |
| 103227 | Essentials Vinyl Glove - Powder Free - XL | 10/100ct |

COMPANIONS POLYETHYLENE GLOVES

| | | |
|--------|--|----------|
| 103342 | Merit Polyethylene Glove - Clear - Powder Free - Small | 10/100ct |
| 103343 | Merit Polyethylene Glove - Clear - Powder Free - Med | 10/100ct |
| 103344 | Merit Polyethylene Glove - Clear - Powder Free - Large | 10/100ct |

COMPANIONS NITRILE GLOVES

| | | |
|--------|--|----------|
| 103998 | Nitrile Glove - Powder Free - Black - Small | 10/100ct |
| 103999 | Nitrile Glove - Powder Free - Black - Medium | 10/100ct |
| 104008 | Nitrile Glove - Powder Free - Black - Large | 10/100ct |
| 104009 | Nitrile Glove - Powder Free - Black - XL | 10/100ct |
| 104010 | Nitrile Glove - Powder Free - Blue - Small | 10/100ct |
| 104011 | Nitrile Glove - Powder Free - Blue - Medium | 10/100ct |
| 104012 | Nitrile Glove - Powder Free - Blue - Large | 10/100ct |
| 104013 | Nitrile Glove - Powder Free - Blue - XL | 10/100ct |

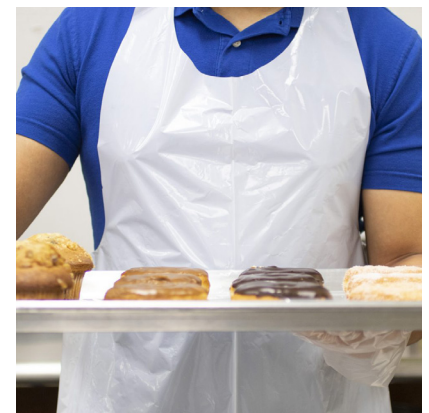


Apron Poly

| | | |
|--------|--|-------|
| 103992 | Apron Poly - Low Density - Medium Duty 28x46 | 100ct |
| 103991 | Apron Poly - Low Density - Heavy Duty 28x46 | 100ct |

PLASTIC THANK YOU BAGS

| | | |
|-------|--|-----------|
| 81381 | Bag Plastic Thank You 11.5x6.5x21 12mic | 1 1000 ct |
|-------|--|-----------|





DELI PAPER (INTERFOLD)

| | | |
|-------|--|----------|
| 82006 | Deli Paper, Interfold, 8" x 10.75" 406629 | 12/500ct |
| 82035 | Deli Paper, Interfold, 12" x 10.75" 406227 | 12/500ct |



DELI PAPER (FLAT)

| | | |
|-------|---|----------|
| 81719 | Deli Paper, Flat, 12" x 12" 406226 | 5/1000ct |
| 82580 | Thermo Foil Sandwich Wrap, 406256 10.5" x 14" | 4/500ct |

BAKERY

| | | |
|-------|---|----------|
| 82129 | Pan Liners, Quilon, 16.375" x 406253 24.375", Greaseproof | 1/1000ct |
|-------|---|----------|



TRADITIONAL FILM WRAP CUTTER BOXES

| | | |
|-------|------------------------------|--------|
| 82648 | Film Wrap 12x2000 Cutter Box | 1 Roll |
| 82650 | Film Wrap 18x2000 Cutter Box | 1 Roll |



TRADITIONAL FILM WRAP SLIDE CUTTER BOXES

| | | |
|-------|------------------------------------|--------|
| 82649 | Film Wrap 12" x 2000' Slide Cutter | 1 roll |
| 82651 | Film Wrap 18" x 2000' Slide Cutter | 1 roll |
| 82652 | Film Wrap 24" x 2000' Slide Cutter | 1 roll |



FOOD BAGS

| | | |
|--------|---------------------------------|-------|
| 103997 | Bag Food 2 Gal Zip 13x15.5 2mil | 100ct |
| 103993 | Bag Food Pint Zip 6.5x6 2mil | 500ct |
| 103995 | Bag Food Quart Zip 7x8 2mil | 500ct |
| 103996 | Bag Food Gal Zip 10.5x10.5 2mil | 250ct |

COMPANIONS PAPER

| | | |
|-------|---|--------------|
| 83334 | Napkin Beverage 1ply 9x9 White | 8/500ct |
| 83338 | Napkin Dinner 15x17 1ply 1/8fd White | 20/250ct |
| 83335 | Napkin Dinner 15x17 2ply 1/8fd White | 20/150ct |
| 83336 | Napkin Dinner 16x16 1ply 1/4fd White | 12/250ct |
| 83337 | Napkin Lunch 13x11 1ply 1/4fd White | 12/500ct |
| 83347 | Napkin Interfold 6.5x8 Natural 1 Ply | 24/250 ct |
| 83349 | Napkin Interfold 6.5x8 White 1 Ply | 24/250 ct |
| 83330 | Towel C-Pull 7.6x12 White (U) | 6/600ct |
| 83328 | Towel Multifold 9.5x9.25 Brown (U) | 16/250ct |
| 83329 | Towel Multifold 9.5x9.25 White (U) | 16/250ct |
| 83346 | Towel Roll Hand 8x350' Brown 1ply | 12/350' roll |
| 83326 | Towel Roll Kitchen Perf 11x7.8 White 2ply (U) | 30/85ct |
| 83327 | Towel Roll Kitchen Perf 11x8 White 2ply (U) | 12/250ct |
| 83325 | T Tissue 4.14x3.5 2ply Wrap (U) | 96/500ct |
| 83342 | T Tissue Jumbo Double Layer 1ply 750' White | 12/750' roll |
| 83324 | T Tissue Roll Jumbo 1000' 2ply (U) | 12/1000ct |
| 83332 | Towel Roll Hand 8x800' Brown 1ply | 6 800' roll |
| 83333 | Towel Roll Hand 8x800' White 1ply | 6 800' roll |
| 83339 | Towel Roll Kraft Hardwound 700' | 6 700' roll |
| 83341 | Towel Roll White Hardwound 700' | 6 700' roll |



HAND TOWEL DISPENSER

| | | |
|-------|---|------|
| 83343 | Disp Hand Towel Electronic Hands Free Black | 1 Ea |
| 83345 | Disp Twin Jumbo T Tissue Black | 1 Ea |





LINEAR LOW ON CORELESS ROLLS

| | | |
|-------|---------------------------------|---------------|
| 88413 | Can Liner 60g 95mil 38x58 White | 100 (10/10ct) |
|-------|---------------------------------|---------------|

RECYCLED CONTENT LINEAR LOW ON CORELESS ROLLS

| | | |
|-------|-------------------------------------|---------------|
| 88414 | Can Liner 45-45g 1.2mil 40x46 Black | 100 (10/10ct) |
|-------|-------------------------------------|---------------|

CAN LINERS

| | | |
|-------|---------------------------------------|---------|
| 88373 | Can Liner 12-16gal 8mic 24x33 Natural | 20/50ct |
|-------|---------------------------------------|---------|

| | | |
|-------|--|---------|
| 88374 | Can Liner 40-45gal 16mic 40x48 Natural | 10/25ct |
|-------|--|---------|

| | | |
|-------|--|--------|
| 88375 | Can Liner 56g Glut 43x48 16mic Natural | 8/25ct |
|-------|--|--------|

| | | |
|-------|-----------------------------------|--------|
| 88412 | Can Liner 60g 16mic 38x60 Natural | 8/25ct |
|-------|-----------------------------------|--------|

| | | |
|-------|----------------------------------|----------|
| 88148 | Can Liner 38x58 60g 1.3mil Clear | 10/10 ct |
|-------|----------------------------------|----------|

| | | |
|-------|---|----------|
| 88422 | Can Liner Clear Ldpe 56gal 42.5x48 1.3mil | 10/10 ct |
|-------|---|----------|

CLEANING SUPPLIES

| | | |
|-------|---------------------------------|---------|
| 98489 | Chem Aerosol All Purpose Orange | 6/19 oz |
|-------|---------------------------------|---------|

| | | |
|-------|---|---------|
| 98490 | Chem Aerosol Stainless Maintainer Water Based | 6/19 oz |
|-------|---|---------|

| | | |
|-------|--|---------|
| 98492 | Chem Aerosol Heavy Duty Foaming Oven Cleaner | 6/19 oz |
|-------|--|---------|

| | | |
|-------|------------------------------------|----------|
| 98481 | Chem Aerosol Glass Cleaner Foaming | 12/19 oz |
|-------|------------------------------------|----------|

updated January 2024

